

GOREBRIDGE

LOCAL PLACE PLAN 2024



- 3 FOREWORD
- 4 INTRODUCTION
- 5 OUR COMMUNITY NOW
- 10 COMMUNITY CONSULTATION
- 12 PICTURE MY PLACE
- 13 GOREBRIDGE LOCAL PLACE PLAN GIVES REGARD TO NATIONAL PLANNING FRAMEWORK 4
- 18 PROPOSITIONS FOR CONSIDERATION IN THE MIDLOTHIAN LOCAL DEVELOPMENT PLAN
- 21 WORKING TOGETHER FOR A BETTER PLACE FOR EVERYONE!
- THEMES AND PRIORITIES FOR COMMUNITY ACTION:
- 22 THEME 1 | MOVEMENT
- 23 THEME 2 | SPACES
- 24 THEME 3 | RESOURCES
- 25 THEME 4 | CIVIC
- 27 THEME 5 | STEWARDSHIP
- 29 OUR COMMUNITY VISION
- 30 MAKING THE LINKS TO THE SINGLE MIDLOTHIAN PLAN
- 31 MONITORING AND REVIEW
- 31 ACKNOWLEDGEMENTS
- 32 MAKING IT HAPPEN



We are pleased to present one of the first Local Place Plans to be prepared in Midlothian. This is the outcome of hard work and commitment by the Gorebridge and District Community Council working together with Gorebridge Community Development Trust and Gorebridge Community Cares alongside their community and all those with an interest in the future of Gorebridge and District.

The Gorebridge Local Place Plan has been prepared by following the outcomes of the consultation and workshops that took place during 2021-23 supported by the Coalfields Regeneration Trust (CRT).

The CRT Place Standard Toolkit and Virtual Engagement Room allowed us to reach out to the local community and has been a key driver behind the content of this work.

We have worked closely with the National Planning Framework (NPF4) and used it as our guide when framing our Local Place Plan.

Thanks go to Green Map System for their support in providing their resources to help us make the spatial mapping as accessible as possible using icons to identify policy and place.

This is very much a plan for the people of the Gorebridge and District area and their involvement

has helped guide how the district can develop in the future and ensure that it continues to be an attractive place to live, work, study, enjoy and invest.

To help achieve this, the Gorebridge Local Place Plan sets out a future vision for how our communities could be improved and the actions required to help achieve this.

The local community have also identified community action priorities that they want to see happen. These are set out under the five themes of the Improvement Service 'Place and Wellbeing Outcomes' designed to improve Scotland's wellbeing and reduce inequality.

The community working together has been the key to success so far and continues to act as a benchmark for future engagement in planning and community planning in our district.

INTRODUCTION



4

“ Whatever the problem, community is the answer. MARGARET WHEATLEY

OUR COMMUNITY NOW



Location

Gorebridge is located 4 miles south of Dalkeith, to the east of the A7 (the original Edinburgh – Carlisle trunk road).

Population

Most of the statistics referred to in the plan come from 2011 Census data and since this time Gorebridge's demography has substantially changed. Midlothian is the fastest growing area in Scotland and has witnessed a 16.1% growth in population.

Gorebridge
8,180
Status Population Estimate 2021-06-30

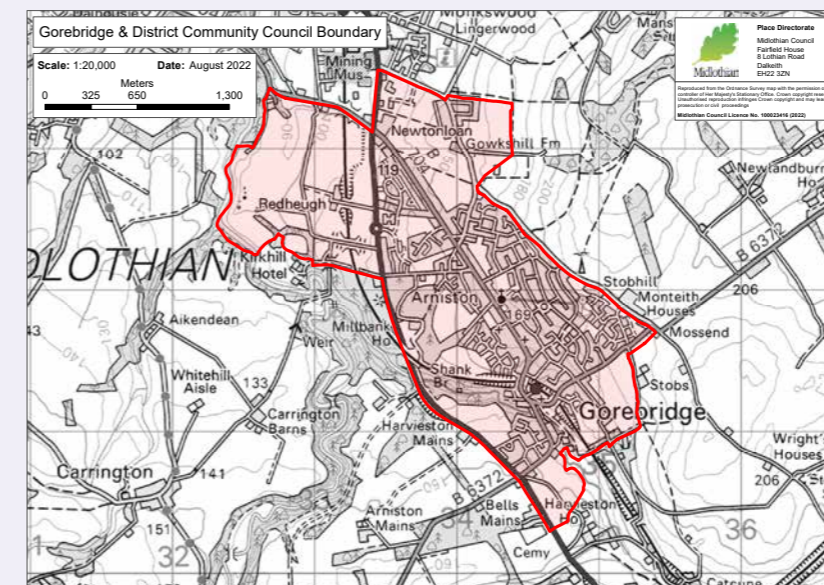
CRT Place is a place based approach to support the regeneration and creation of sustainable and resilient communities in Scotland's former coal mining communities. We are using a range of methods to capture people's views of where they live, as it is now and how they see the future in their local community. This approach promotes dialogue and cooperation between community members, partners and outside agencies. Any type of community led plan is always a work in progress, however it helps to give concrete steps to help shape local communities going forward. The aim of this is that future generations can thrive in changing times so that no one is left behind.

Background

Gorebridge community members produced the first Gorebridge Community Action Plan that ran from 2015-2020 with support from Coalfields Regeneration Trust. Due to the effects of the Covid pandemic it's been a slow journey to be able to review the plan but over time the Gorebridge Steering Group have been working with CRT to organise a community wide engagement with the

aim of producing a new Gorebridge Local Place Plan to deliver the spatial vision and community action priorities for the district.

The Steering group during the process of creating this local place plan drew from members of Gorebridge and District Community Council, Gorebridge Community Development Trust and Gorebridge Community Cares.



Gorebridge and District Community Council Boundary and is also the boundary for the Local Place Plan

OUR COMMUNITY NOW



Past and Present

Gorebridge's rich history stems from the nineteenth century's industrial development, mainly coal mining. A noted feature is the Main Street, a conservation area, with its largely intact late nineteenth century architecture, claimed as one of Scotland's finest. The energy and hard work of the people in Gorebridge has made, and continues to make, the place vibrant and inclusive of diversity.

Through time Gorebridge has embraced several villages, Gorebridge, Stobhill, Arniston, Gowkshill and Birkenhead to name a few. While each village continues with a separate identity, they have come together within the common identity of Gorebridge. Similarly, the more recent housing communities have adopted their own community identities while they integrate into the Gorebridge community. Community planning for Gorebridge's future is strengthened by understanding the present and appreciating the past. Adapting to change is nothing new for people in Gorebridge.

Gorebridge conservation area

Gorebridge Conservation Area covers a largely intact 19th century core of commercial and residential buildings enclosing the curved slope of Main Street. It has been designated not only for the value of the individual buildings, but also for its significance as a group of buildings

Housing

The 2011 Census tells us that the housing in Gorebridge was **50%** Owner Occupier, **28%** Local Authority, **14%** Housing Association with **8%** other rented. Today the mix of housing has changed dramatically with the large number of private housing developments eg Kings Meadow, Harvieston Park, Whitehouse and Dewar Park that have taken place in the area in recent years.



Source: Conservation Area Character Appraisal & Management Plan

Health & Care

The average age of people with good health or people with a limiting long term illness roughly equates to Scotland as a whole. Those who are economically inactive and permanently sick / disabled is slightly more than that of Scotland as a whole. In addition there are more households with one or more carers in residence (19.3% compared to 16.8%). Census 2011

The community survey highlighted the pressure that the growth in population is putting on the primary care medical centre in terms of waiting times for appointments. Gorebridge is served by a dental practice and an optometrist. The Newbyres Care Home provides residential care.

Local Economy and Employment

The average age of a person who is unemployed is **31.8** compared to **35** for Scotland as a whole. Youth unemployment is high, running almost 7% above the national figure of **27.8%**. Census 2011

Unemployment among the age group 50+ is conversely well below the national rate. There are less people engaged in manufacturing and more in construction and the financial sector. There are fewer managers, senior officials and professional people and more people involved in elementary occupations. These are cleaning offices and other buildings, washing windows, delivering messages or goods, product-sorting, packing by hand and freight handling.

In recent years Gorebridge has experienced a growth in small scale service businesses.

Education and Training

Gorebridge has four primary schools, Gorebridge Primary, Stobhill Primary, St Andrews RC Primary and Gore Glen Primary.

Local children attend nearby Newbattle Community High School, St David's RC High School or Lasswade High School.

The % of households where no one aged 16-74 has qualifications or is in full-time education is higher than Scotland as a whole and the % of 16-18 year

olds who are in full-time education is much lower than for Scotland.

This educational attainment level is underlined by the discrepancy between the % of the population with no qualification being 7% higher in Gorebridge than in Scotland. The area outscores Scotland markedly for the number of people with low level qualifications and is outscored itself, again markedly, by Scotland as the level of qualification increases. Census 2011

Social and Community

Gorebridge has a number of key organisations that all work for the benefit of the community and include Gorebridge and District Community Council, Gorebridge Community Development Trust, Gorebridge Parish Church and Gorebridge Community Cares. The Gorebridge Beacon is a key community space that is available for hire as a social space and also hosts a community café. The Gorebridge Cares Hive hosts training and community activities with a focus on supporting young people.

Useful links for further information:

www.communitycouncilgorebridge.weebly.com

www.gorebridge.org.uk

www.gorebridgecommunitycares.org.uk

www.gorepc.com

Environment

Gorebridge is rich in natural heritage with sweeping panoramic views across the Midlothian plain and Pentland Hills. The Gore Glen is a haven for wildlife and walkers alike and highlights how an industrial landscape can be reclaimed by nature.

Public Transport

In September 2015 Gorebridge saw the return of the railway with a new station built on the site of the original station. This gives rail access to the Borders and Edinburgh Waverley railway station.

There are bus services that are provided by Lothian Buses. A regular bus goes to Edinburgh city centre with another linking to Dalkeith and Edinburgh Royal Infirmary. Gorebridge has no direct bus link to Midlothian Community Hospital.

Useful links include:

www.lothianbuses.com

www.bustimes.org/localities/gorebridge

There are bus services that are provided by Lothian Buses.

Useful links include:

www.lothianbuses.com

www.bustimes.org/localities/gorebridge

Heritage

The most commonly held view is that Gorebridge's name came from the bridge across the Gore Water, a tributary of the South Esk. At Stobsmill on the bank of the Gore Water, Scotland's first gunpowder mill started operating in 1794 and closed in 1875. Coal mining could be found from the early nineteenth century and the Arniston Coal Company formed in 1874.

The company managed both the Emily pit (opened in 1858) and the Gore Pit (opened in 1878). Together the pits were known as the Arniston colliery. As the coal industry expanded the village grew as miners and their families migrated into Arniston and Gorebridge. Alongside mining developments, the railway was built and reached Gorebridge by the mid nineteenth century, this became known as the Waverly line, and closed in 1969.

There is a rich heritage in the Gorebridge area with a range of historic assets including:

- Newbyres Castle
- The Old Station House
- The Gunpowder Mill
- Old post office on Main Street which is a listed building
- Miners bowling club is a listed building
- Conservation area based around the Main Street
- Powdermill Brae and Vogrie road have a number of interesting buildings
- Heritage track way at Gore water
- Old Gunpowder Mill
- Old cottages Blacksmith
- Auld Gala Park
- Old Laundry and Old mine shafts



COMMUNITY CONSULTATION



Gathering Everyone's Views

A series of community engagement events and on line surveys over the last year has enabled us to gather people's views to help inform this action plan.

Consultations included:

- The Beacon hosted Place Standard events on the 19th and 20th of February 2022,
- Two Community mapping workshops were held on the 5th of November 2022
- A Community Gathering held in the Beacon on the 14th of January 2023
- 3 Wishes Campaign - the 3 Wishes campaign took the form of a postcard and on line survey option and was used as well as at local events.
- An online youth survey was carried out using social media and schools

142 postcards completed making

426 wishes for a better place to live

Using the mapping language of icons we can show the links to NPF4 Policies www.greemap.org



I wish we had opportunities to learn about the history of Gorebridge

I wish there were no broken glass on the streets

Gorebridge Local Place Plan

Throughout the Local Place Plan development and consultation phases regard was made to the following plans and policies:

1. Midlothian Local Development Plan 2017 www.midlothian.gov.uk/downloads/file/4893/midlothian_local_development_plan
2. Single Midlothian Plan 2023 – 2027 www.midlothian.gov.uk/downloads/download/89/single_midlothian_plan_documents
3. Gorebridge and District Community Action Plan www.coalfields-regen.org.uk/wp-content/uploads/2019/10/Gorebridge-Community-Action-Plan-2015-2020.pdf
4. The Fourth National Planning Framework (NPF4) was consulted throughout the same period. www.gov.scot/publications/national-planning-framework-4/

Community Engagement Using the Place Standard Assessment Tool

Community consultations included the use of the Place Standard tool to enable people to assess the place where they live and share views on how to make it better.

Each standard explores an aspect of a place including both physical and social. There are 14 questions which you can score from 1 (poor) to 7 (excellent).

This allows you to create a graphic picture of your place.

A virtual engagement room (VER) of the Place Standard to reach out to a wider audience was open from January 2022 – August 2022. A mail drop carried out by volunteers reached 5,000 households and included a QR code / web address with an invitation to visit the VER.

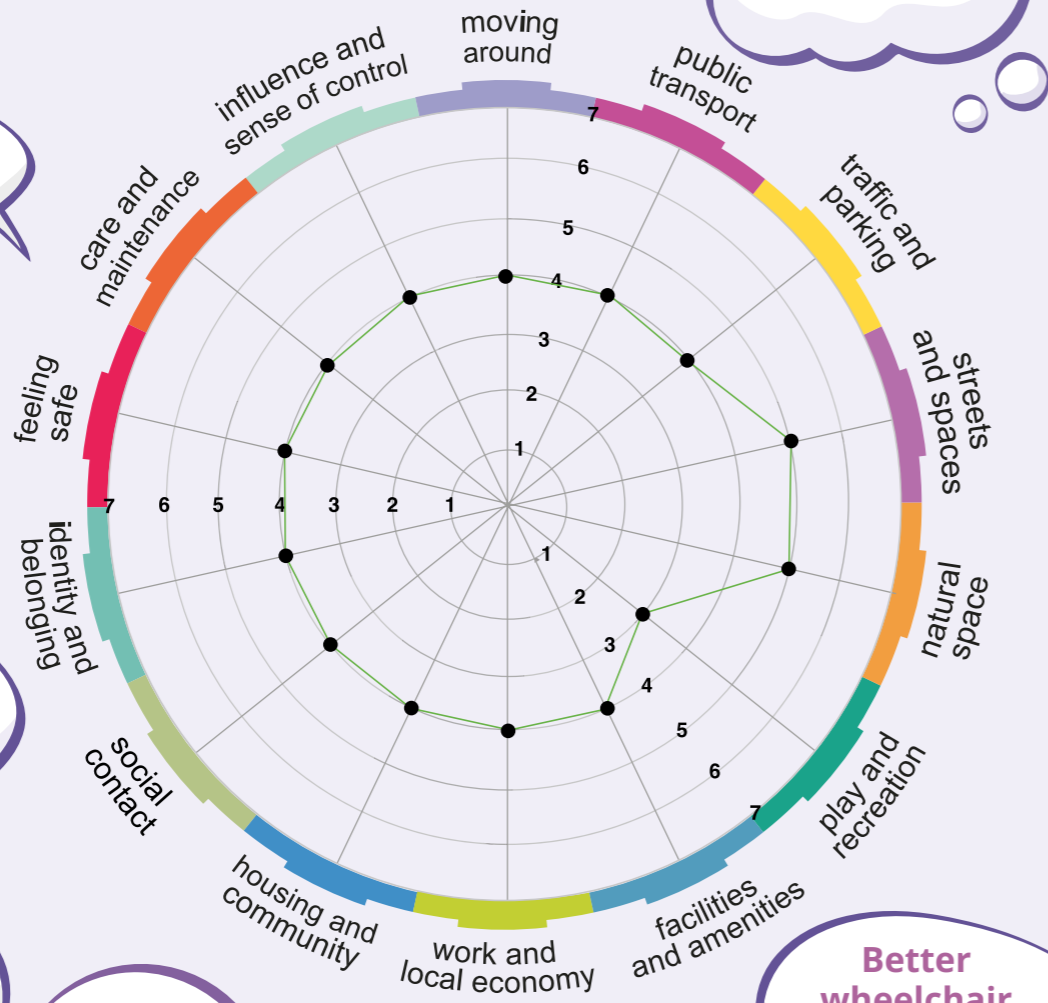


Results of the Place Standard Assessment

130 Place Standard Assessments were completed

The graphs shows the strong and the weak areas, the higher the score plotted the better the service or provision. This gives a good indicator of where improvements need to be made.

The Place Standard Tool was open to the community over a weekend period at the Beacon



A Mother and Toddler Group

A secondary school

Better buses

Help the active groups thrive

Affordable supermarket

Access to health services

More jobs

A youth club for 14+

Better wheelchair access

GOREBRIDGE LOCAL PLACE PLAN GIVES REGARD TO NATIONAL PLANNING FRAMEWORK 4

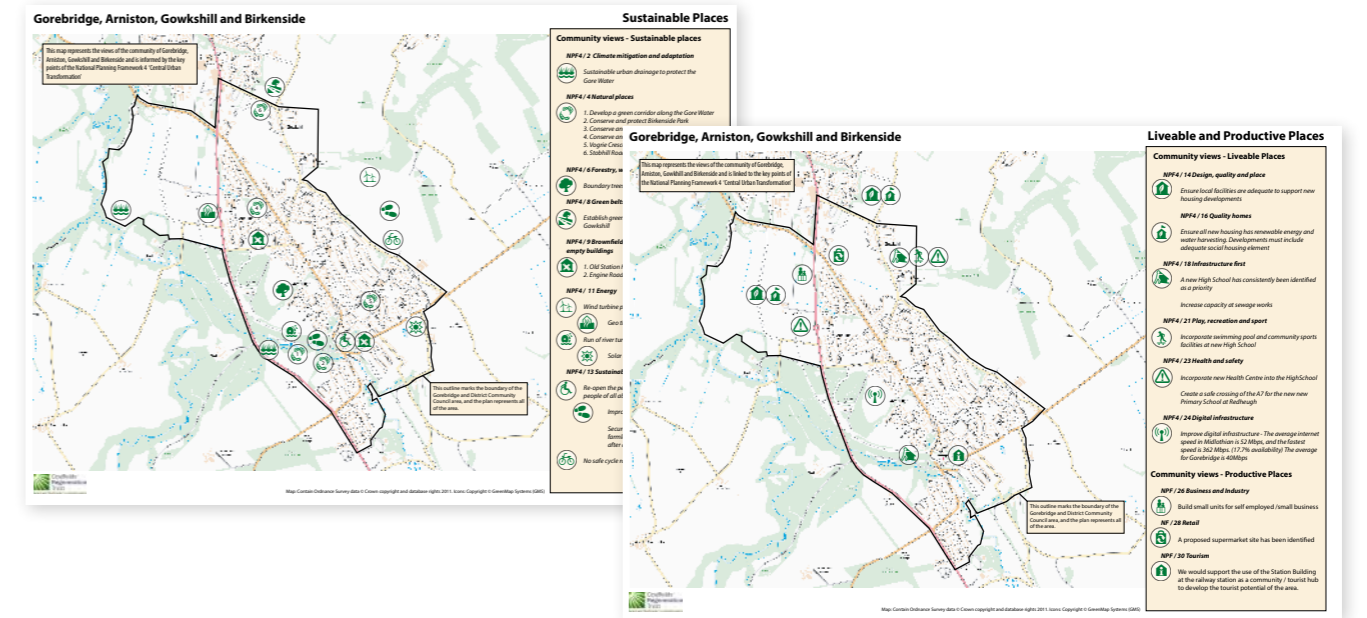
“The world is changing, and so are Scotland's places. This strategy sets out how we will work together in the coming years to improve people's lives by making sustainable, liveable and productive places. This will play a key role in delivering on the United Nations Sustainable Development Goals, as well as our national outcomes. We have substantially re-worked the Framework's 'National Spatial Strategy', which sets out how our approach to planning and development will help achieve a net zero, sustainable Scotland by 2045.”

STATEMENT BY MINISTER FOR PUBLIC FINANCE, PLANNING AND COMMUNITY WEALTH TOM ARTHUR ON THE FOURTH NATIONAL PLANNING FRAMEWORK (NPF4) ON 8TH NOVEMBER 2022

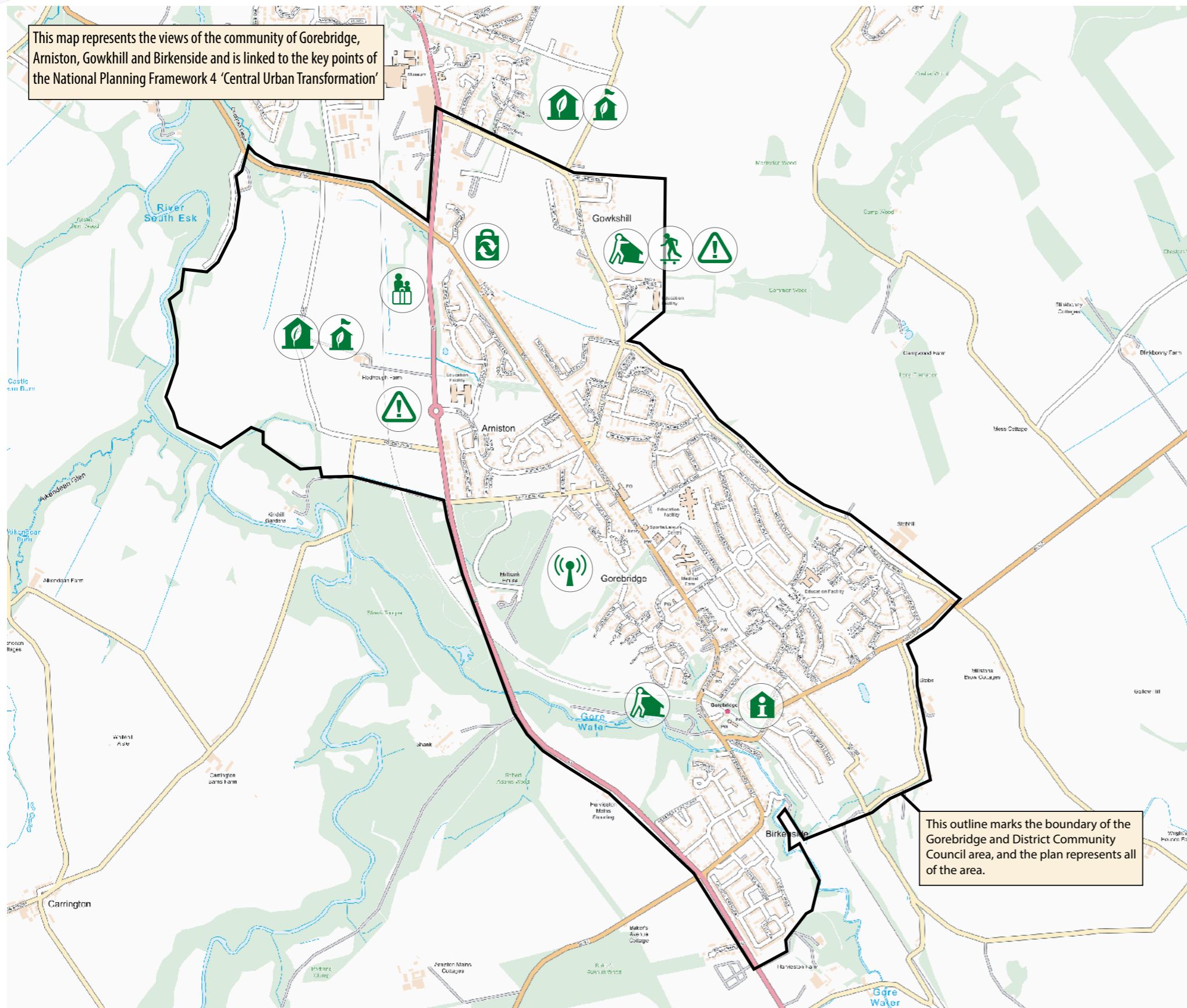
Our Local Place Plan Maps use icons to represent NPF4 policies

The information gathered from the workshops was translated onto the themed maps using Green Map Icons that represent their relationship to National Policy as set out in NPF4. This helps fulfil a requirement of Local Place Plans to show the links between local propositions and National policies. Map themes include Sustainable, Productive and Liveable.

How to read the icons: NPF4/2 represents NPF4 Policy 2 Climate Mitigation and Adaptation



Maps can be accessed on line www.bit.ly/GorebridgeLPP




This map represents the views of the community of Gorebridge, Arniston, Gowkhill and Birkenhead and is linked to the key points of the National Planning Framework 4 'Central Urban Transformation'


This outline marks the boundary of the Gorebridge and District Community Council area, and the plan represents all of the area.

Community views - Liveable Places


NPF4 / 14 Design, quality and place

 Ensure local facilities are adequate to support new housing developments

NPF4 / 16 Quality homes


 Ensure all new housing has renewable energy and water harvesting. Developments must include adequate social housing element

NPF4 / 18 Infrastructure first


 A new High School has consistently been identified as a priority

Increase capacity at sewage works


NPF4 / 21 Play, recreation and sport

 Incorporate swimming pool and community sports facilities at new High School

NPF4 / 23 Health and safety


 Incorporate new Health Centre into the High School
Create a safe crossing of the A7 for the new new Primary School at Redheugh

NPF4 / 24 Digital infrastructure


 Improve digital infrastructure - The average internet speed in Midlothian is 52 Mbps, and the fastest speed is 362 Mbps. (17.7% availability) The average for Gorebridge is 40Mbps

Community views - Productive Places


NPF / 26 Business and Industry

 Build small units for self employed /small business

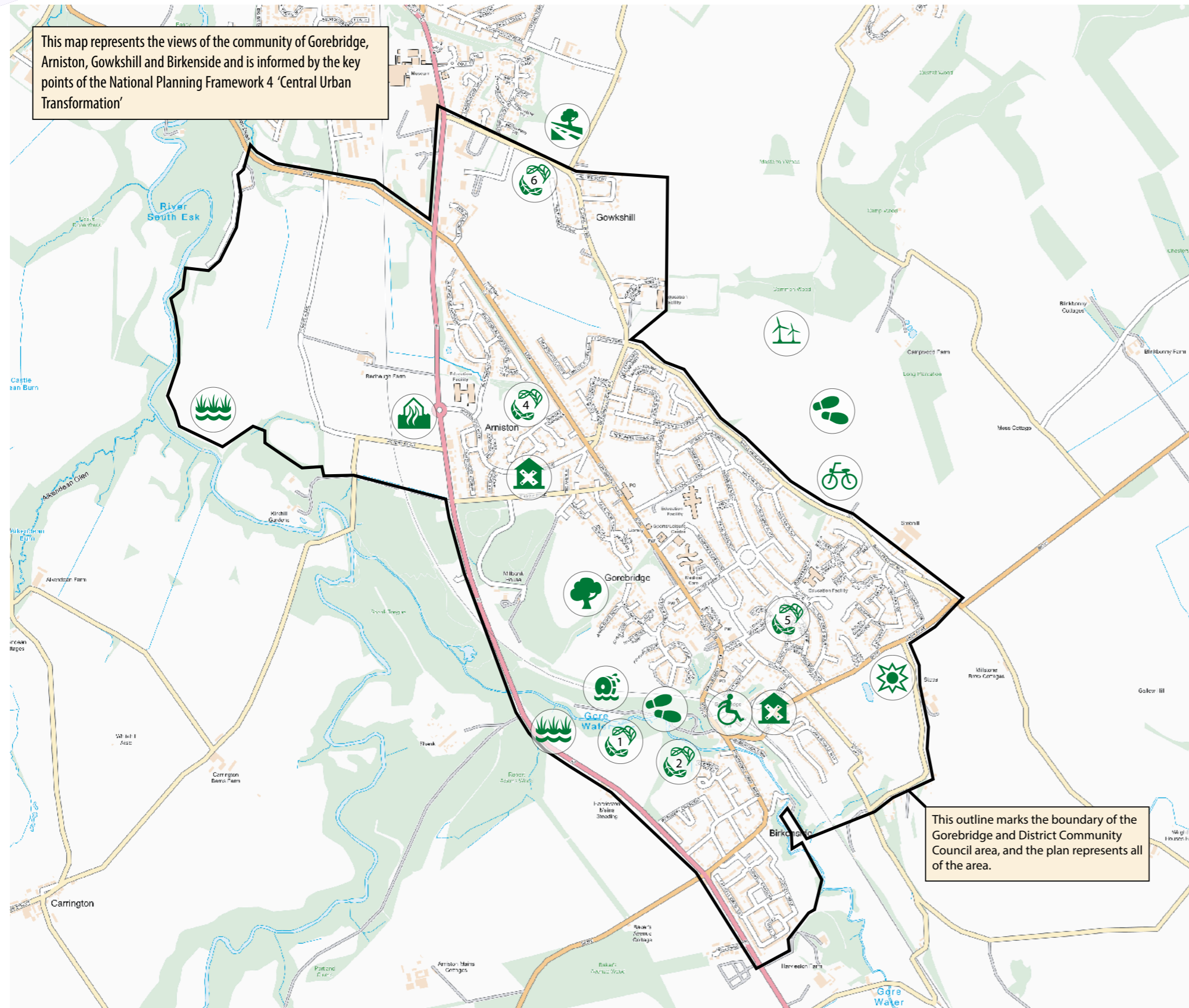
NPF / 28 Retail

 A proposed supermarket site has been identified

NPF / 30 Tourism

 We would support the use of the Station Building at the railway station as a community / tourist hub to develop the tourist potential of the area.

This map represents the views of the community of Gorebridge, Arniston, Gowkhill and Birkenside and is informed by the key points of the National Planning Framework 4 'Central Urban Transformation'



This outline marks the boundary of the Gorebridge and District Community Council area, and the plan represents all of the area.

Community views - Sustainable places

NPF4 / 2 Climate mitigation and adaptation

- Sustainable urban drainage to protect the Gore Water

NPF4 / 4 Natural places

- 1. Develop a green corridor along the Gore Water
 2. Conserve and protect Birkenside Park
 3. Conserve and protect Auld Gala Park
 4. Conserve and protect Arniston Park
 5. Vogrie Crescent South Park
 6. Stobhill Road Park

NPF4 / 6 Forestry, woodland and trees

- Boundary trees on the Nancy Teuch pathway

NPF4 / 8 Green belts

- Establish green belt between new housing and Gowkhill

NPF4 / 9 Brownfield, vacant and derelict land and empty buildings

- 1. Old Station House
 2. Engine Road site

NPF4 / 11 Energy

- Wind turbine potential site at Camp Wood
- Geo thermal from old mine workings
- Run of river turbine potential site at Gore Water
- Solar farm at Lady Brae

NPF4 / 13 Sustainable transport

- Re-open the pedestrian access at the station for people of all abilities
- Improve and maintain core path network
- Secure Rights of Way and paths through farmland that are in danger of being lost after development
- No safe cycle routes

PROPOSITIONS FOR CONSIDERATION IN THE MIDLOTHIAN LOCAL DEVELOPMENT PLAN

18



Sustainable and Liveable Places

THE GORE GLEN & THE GORE WATER

The following Propositions under this theme relate to the following National Planning Framework Policies: NPF4/2 NPF4/4 NPF4/11 NPF4/7 NPF4/18

1. The Gore and Arniston Glens are a significant part of Gorebridge, Arniston and Birkenhead (this area also falls under the remit of Moorfoot CC).
- 1.1 The protection, conservation, preservation of its ecosystem, rivers, walks and heritage are essential.
- 1.2 The development of green corridor along Gore and Arniston Glens linking with the South Esk River is important as a legacy for future generations to enjoy nature and the surrounding countryside.
- 1.3 The Glens are important for heritage and a path / trackway is indicated with information boards at the relevant sites.

Ref: MLDP 2017 Section 8.2.55

Ref: SMP 2023-2027 7.Midlothian will be greener

- 1.4 There should be no house building or development that encroaches on this site. The Council must ensure that developers that border the Glens treat the neighbouring ecosystems and biodiversity with respect,

especially the Gore Water, the associated water courses, wild flowers and wildlife habitats.

- 1.5 Reference to previous sewage overflow issues at the Gore Water indicates that the sewage works is more than likely to be insufficient for the proposed new housing developments. Discussions and actions must be agreed with Scottish Water to ensure that capacity will meet demand.
- 1.6 New housing developments must feature adequate sustainable urban drainage to slow the flow and help prevent flooding downstream.

Ref: MLDP 2017 Section 8 Settlement Statements e22 Redheugh

NATURAL SPACES & FORESTRY & TREES – Sustainable Places

The following Propositions under this theme relate to the following National Planning Framework Policies: NPF4/4 NPF4/6

2. The Gorebridge and District Community Council support that the following local green spaces should be conserved and protected for the benefit of community; the Gore Glen complex, Birkenhead Park, Auld Gala Park, Arniston Park, Vogrie Cres South Park and Stobhill Road Park.

19

- 2.1 We recommend these sites as additions to the existing sites stated in ENV8

Ref: MLDP 2017 Section 8.2.55

- 2.2 The Nancy Teuch pathway – the boundary trees should be preserved as a haven for birds and other wild life.

Ref: SMP 2023-2027 7.Midlothian will be greener

BROWNFIELD, DERELICT AND VACANT BUILDINGS AND LAND

The following Propositions under this theme relate to the following National Planning Framework Policies: NPF4/9

3. The Gorebridge and District Community Council would like to request the following use of brownfield, vacant buildings for the benefit of the community.
 - 3.1 Ownership, or at least ring fencing the Station Building at the train station for future community use.
 - 3.2 Use of the polluted site at Engine Road for the benefit of the community.

Ref: MLDP 2017 Section 8.2.48

ENERGY

The following Propositions under this theme relate to the following National Planning Framework Policies: NPF4/11

4. Gorebridge is committed to renewable energy seeing the financial benefits it has brought to the neighbouring residents and communities, and the contribution it makes towards a low carbon future.
 - 4.1 We support that all housing developments and public buildings are required to have renewable energy as standard, such as PV on the roof and water harvesting.
 - 4.2 We would support E-charging stations to be made available for electric vehicles.
 - 4.3 A comprehensive survey needs to be undertaken to ascertain the viability of the following potential sites for renewable energy production:
 - 4.3.1 Hydro power at the Gore water near Old Mills
 - 4.3.2 Community wind turbines – eg Windfarm at Camp wood
 - 4.3.3 Community heating scheme from geothermal eg at Millbank House area and other mine workings
 - 4.3.4 Community Solar farm

Ref: SMP 2023-2027 7.Midlothian will be greener

SUSTAINABLE TRANSPORT

The following Propositions under this theme relate to the following National Planning Framework Policies: NPF4/12

5. While Gorebridge has welcomed the return of the railway and its attendant station, the lack of an integrated bus / train service does not encourage the use of more sustainable transport options. We would like to see this addressed.

Railway

- 5.1 Make the Station accessible for pedestrians of all abilities
- 5.2 Re-open the pedestrian access

Ref: MLDP 2017 Section 8.2.50

Cycling

- 5.3 Assess, create and improve safe cycle routes throughout the area
- 5.4 School routes should be a priority including off road options

Walking / wheeling

- 5.5 Gorebridge circular walk – ensure maintenance is carried out on this and all core path networks and there is scope to improve accessibility for the path network.
- 5.6 Secure Rights of way - paths and trackways should be kept open and maintained and protected.
- 5.7 There is major concern that paths through farmlands are being lost due to development.

Ref: SMP 2023-2027 7.Midlothian will be greener

DESIGN, QUALITY & PLACE

LOCAL LIVING, 20 MINUTE NEIGHBOURHOODS, QUALITY HOMES & RETAIL – Liveable and Productive Places

The following Propositions under this theme relate to the following National Planning Framework Policies: NPF4/14 NPF4/15 NPF4/16 NPF4/24 NPF4/28

6. HOUSING and SERVICES
The most recent population estimate for 2021 for Gorebridge, Arniston and Birkenhead is 8081 with the future addition of significant housing developments in both Redheugh and Lingerwood the pressure on local services has already become intolerable without appropriate planning

measures being considered in the new LDP. This includes:

- 6.1 Improvements with regard to formal and informal education provision, local school provision
- 6.2 Access to appropriate and timeous Healthcare services
- 6.3 Sports and Leisure facilities,
- 6.4 Library services
- 6.5 Sewage treatment services to match the population increase
- 6.6 Waste Management services to match the population increase
- 6.7 Digital Infrastructure for housing and business needs to match demand
- 6.8 The community survey highlights the need for more social and affordable housing for rental including a full range of house sizes to meet the changing needs of the community, in particular 4 bedroomed houses and one bedroom bungalows.
- 6.9 Electrical and utility supplies to match the population increase.

Ref: MLDP 2017 Section 8.2.46 and .47

Ref: SMP 2023-2027 8. Midlothian will have a wellbeing economy and be better connected

- 6.10 Our survey has identified a need for an affordable supermarket in Gorebridge to promote equality of access to affordable food. Potential site identified Productive Places Map.

Ref: MLDP 2017 Section 8.2.49

Ref: SMP 2023-2027 9. Midlothian will work towards reducing poverty

INFRASTRUCTURE FIRST – Liveable Places

The following Propositions under this theme relate to the following National Planning Framework Policies: NPF4/15 NPF4/18 NPF4/21 NPF4/23

- 7. Community engagement results consistently identify a new High School as the highest priority. Potential locations must be identified. Community Engagement Report link: www.padlet.com/crthub/gorebridge-working-doc-mms0tjmusot5qasc/wish/2712539718
- 7.1 This proposition is an amendment to the current LDP as it is requesting the building of a high school local to the community of Gorebridge and District

- 7.2 Investigate, secure and purchase and ring fence a site with a plan to build a new High School within walking and wheeling distance for the young people of Gorebridge.
- 7.3 A new GP surgery/health clinic should be incorporated within the new High School environs to ensure community cohesion and inclusive acceptance of all economic and cultural diversity.
- 7.4 A sports complex including swimming pool and all weather pitches, gym etc that must be available to the community and be included within the new High School.

Ref: MLDP 2017 Section 8.2.51 Schools

Ref: MLDP 2017 Section 8.2.52 Health Centre

Ref: SMP 2023-2027 5. Midlothian will get it right for every child

Ref: SMP 2023-2027 8. Midlothian will have a wellbeing economy and be better connected

COMMUNITY WEALTH BUILDING

The following Propositions under this theme relate to the following National Planning Framework Policies: NPF4/25 NPF4/24

- 8. Encourage and attract new businesses, especially large ones to locate to Midlothian South, to improve employment opportunities locally.
- 8.1 We support the plans to build small units for self-employed small business in Gorebridge

Ref: MLDP 2017 Section 8.2.48

Ref: SMP 2023-2027 Midlothian will have a wellbeing economy and be better connected

TOURISM

The following propositions under this theme relate to the following National Planning Framework Policies: NPF4/30 NPF4/24

- 9. Support the development of Gorebridge as a tourist destination.
- 9.1 We would support the use of the Station Building at the railway station as a community / tourist hub to develop the tourist potential of the area.
- 9.2 Develop a nature and heritage trail to create a tourist destination linked to the railway.

Ref: SMP 2023-2027 Midlothian will have a wellbeing economy and be better connected

WORKING TOGETHER FOR A BETTER PLACE FOR EVERYONE!

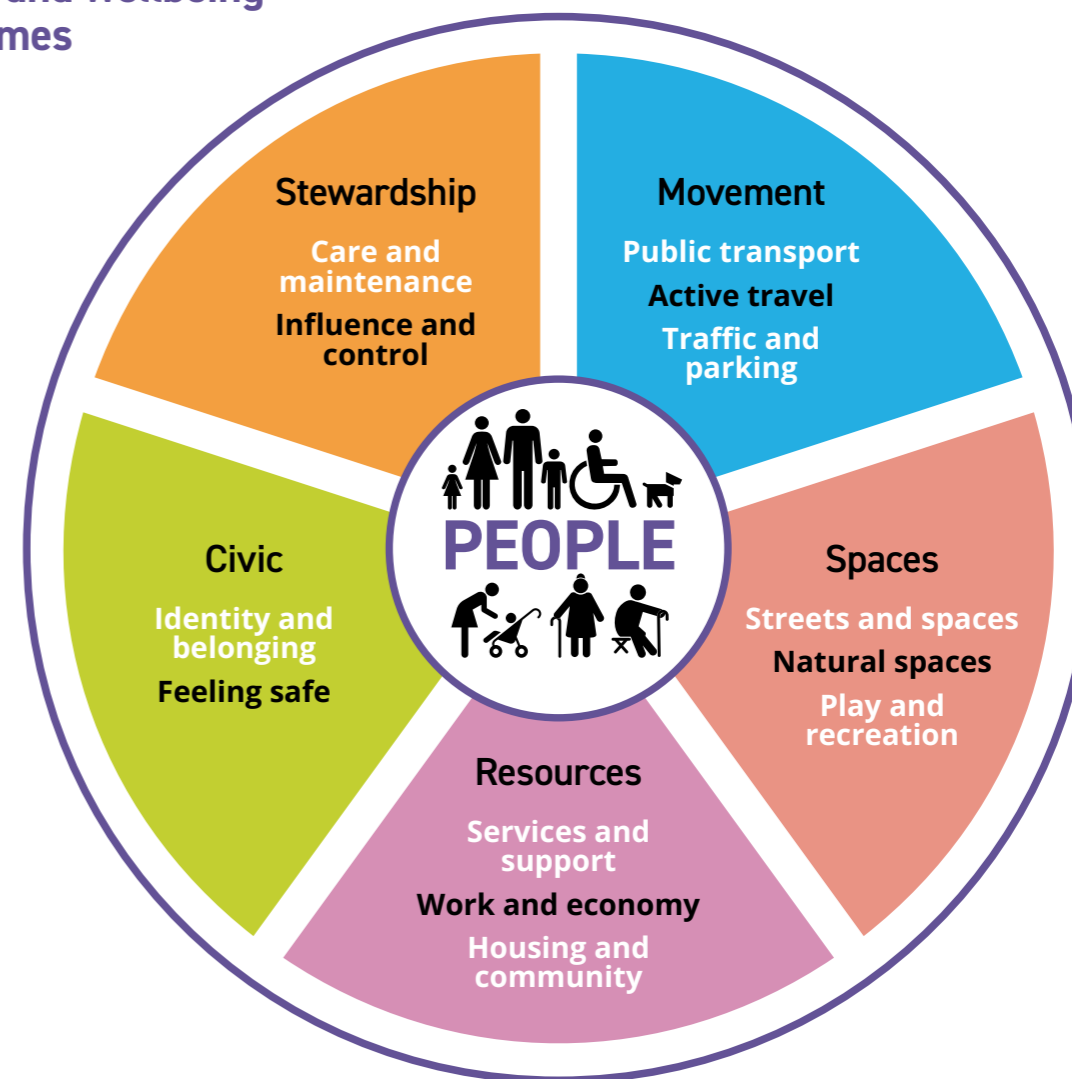
Setting out the priorities for community action

In January 2023 we hosted a Community Gathering so people could review all the findings and vote on what to make action on. The priorities for action that have been identified are set out under the Place and Wellbeing outcomes based on the Place Standard themes.

These themes are all the characteristics of a place that allow those who live, work and relax there to thrive.

The outcomes are for all stakeholders to take collaborative action on delivering in Gorebridge.

Place and wellbeing outcomes



The principles of equality, net-zero emissions and sustainability underpin all of these themes, and all themes should be embedded in policy and action.

This theme highlights the priorities that emerged from community feedback and relate to aspects of your place that include moving around, public transport and traffic and parking.

PRIORITIES

IMPROVE BUS SERVICE



ACTIONS AND POTENTIAL PARTNERS

Continue to lobby for improved services and the reinstatement of the 339 bus route which is especially important to community members to visit larger Supermarkets/Community Hospital.

Work with Lothian Region Transport, Borders Buses and Midlothian Council to improve cross county bus routes.

IMPROVE AND DEVELOP FOOTPATHS AND CYCLE WAYS



Work with partners such as Midlothian Council, Paths for All and Sustrans to take this initiative forward.

Path to be cleared for improved access at Barleyknowe Road

ADDRESS THE PARKING ISSUES



Carry out a mapping exercise to identify potential additional parking in Gorebridge Main Street and other areas of Gorebridge, e.g. Gore Glen area.

TRAFFIC MANAGEMENT E.G SPEEDING



Support the draft proposal to make 20 mph speed limits in local villages and traffic calming measures around schools in particular.

IMPROVE DISABILITY ACCESS/ SAFER CROSSINGS/ DROPPED KERBS



Lobby Midlothian Council and local businesses for improved disability access:

- On pavements
- In premises
- To outside areas

Work with Midlothian Council, to ensure where needed, kerbs are dropped, crossings are made safe and access is improved for all residents.

Stobbs Farm housing – ensure appropriate safe road access - planning was rejected, but it may be applied for in the future.

IMPROVE TRAIN SERVICE



This responsibility belongs to Network Rail and Lothian Regional Transport.

Lobby Midlothian Council/Lothian Regional Transport to investigate the possibility of a bus stop near Gorebridge Railway Station.

POTENTIAL PARTNERS

Public transport providers including Lothian Region Transport and Borders Buses, Midlothian Council, Paths for All and Sustrans, Local Councillors.

This theme highlights the priorities that emerged from community feedback and relate to aspects of your place that include streets and spaces, natural space, play and recreation.

PRIORITIES

A SPORTS COMPLEX INCLUDING SWIMMING POOL AND ALL WEATHER PITCHES, GYM ETC.



ACTIONS AND POTENTIAL PARTNERS

Work with Midlothian Council to ensure that a new High School for Gorebridge is a top priority. This will provide the necessary infrastructure of sports/swimming pools, all weather pitches, gym etc.

Assist local football clubs with plans for improved football facilities

Improve facilities to allow girls/women to take up sport.

Identify possible funding streams to take this forward.

CONSERVE NATURAL SPACES UNDER THREAT DUE TO DEVELOPMENT



Identify and map local green spaces that should be protected for the community and lodged and mapped as part of the local place plan.

CREATE OUTDOOR FACILITIES FOR PLAY AND RECREATION FOR ALL



Work with the local community, Midlothian Council and others to improve green space and upgrade existing facilities and access to green space, especially for disabled groups.

Improve public parks and preserve green space for future generations.

Improve the lighting in Gala Par

PUBLIC TRANSPORT TO ACCESS VOGRIE PARK



Work with Midlothian Council, local Councillors, to lobby for public transport to allow local people to access Vogrie Park to enable those without transport to enjoy this amenity.

MAKE THE MOST OF VACANT AND DERELICT LAND



Identify vacant and derelict land and work with Midlothian Council to resolve these issues, where necessary through compulsory purchase orders, to improve the environment for the community.

MORE SEATING AREAS



Provide more seating areas in public spaces, especially in parks, to ensure that people young and old can enjoy the outdoor environment.

POTENTIAL PARTNERS

Local community, Midlothian Council, local Football Clubs, Sports Scotland, GCDT, GCC, Local Councillors, Midlothian Voluntary Action, Volunteer Midlothia

This theme highlights the priorities that emerged from community feedback and relate to aspects of your place that include facilities and services, work and local economy, housing and community and social interaction.

PRIORITIES

A NEW HIGH SCHOOL FOR GOREBRIDGE



ACTIONS AND POTENTIAL PARTNERS

Midlothian Council to prioritise a new high school for Gorebridge.
Work with Midlothian Council to investigate and secure a site for a new high school.
Build a new high school as a priority.

A LOCAL AFFORDABLE SUPERMARKET



Work with Midlothian Council to identify potential sites for a local supermarket to improve access to affordable shopping.
Lobby retailers such as Aldi and Lidl to build a local store local for Gorebridge as part of promoting equality of access to affordable food.

ACCESS TO FULL RANGE OF HEALTH SERVICES FOR ALL



Create a development strategy to investigate ways of removing barriers for residents to access essential health services locally.
Explore the possibility with Midlothian Council/Lothian NHS of a new Health Centre alongside a new Gorebridge High School.
Extend GP opening hours for working people.
Increase Doctor provision to accommodate the growth in population.
Explore opportunities for enhanced/improved services at local chemists.

REVIVE MAIN STREET WITH SHOPS AND TOILETS



Promote Gorebridge Main Street as a niche shopping area and look to attracting appropriate retail shops.

UPGRADE COMMUNITY FOOTBALL FACILITIES



Assist local football clubs with plans for improved football facilities e.g. all weather pitches.
Improve facilities to allow girls/women to take up this sport.
Identify possible funding streams to take this forward.

APPROPRIATE, AFFORDABLE AND EFFICIENT HOUSING



Working with and lobbying Midlothian Council to provide local people with affordable as well as Social Housing to ensure that Gorebridge people can continue to live in their own community if desired.

MORE TRAINING AND EMPLOYMENT OPPORTUNITIES LOCALLY



Maximise training opportunities locally.
New training facilities could be incorporated into a new Gorebridge High School for students to learn new skills as well as community members to enhance their employment prospects.

POTENTIAL PARTNERS

Local community, Midlothian Council, NHS, Local Councillors, Retailers, Local Football Clubs, local Housing Associations, GCDT, GCC, Midlothian Voluntary Action, Volunteer Midlothian and other training providers.

This theme highlights the priorities that emerged from community feedback and relate to aspects of your place that include identity and belonging and feeling safe.

PRIORITIES

AFFORDABLE EVENTS/ ACTIVITIES FOR ALL AGE GROUPS, ABILITIES AND CULTURES



ACTIONS AND POTENTIAL PARTNERS

Gorebridge has some thriving local youth groups - Gorebridge Scouts and Arniston Rangers Youth Football Club who cater for many children.
Expand the variety of activities, especially for teenagers to allow them safe spaces to grow into adulthood.
Young girls/teenagers do not always want to play contact sport or join organisations, identify safe youth spaces for them to pursue and build on their talents.
Promote the free local events that are available to everyone.
Promote Lend and Mend at Gorebridge Library.
Set up a mother and toddler group, especially for new parents/ carers who may feel isolated with little support.
Supporting the retention of the library and leisure centre as well as other service providers to ensure the continuation of these vital local services.

MORE SOCIAL SPACES E.G. CAFES, COMMUNITY PANTRY



Carry out community engagement to establish level of interest and what the need is eg reduce isolation, access to affordable food etc.

INCREASE PROMOTION OF WHAT'S ON LOCALLY E.G SUPPORT/ GROUPS/ ACTIVITIES



Create a community calendar of existing community events and promote these locally through a Gorebridge Newsletter.
Support the tradition of the Gorebridge Gala celebrations, the Big Lunch and the Christmas Celebration events.
Groups should collaborate and work together to identify and deliver the services the community needs.
Identify which groups deliver which service for clarity and transparency.
Avoid duplication of services.
Keep local history alive with talks and tours.

MORE POLICE PRESENCE AND INITIATIVES TO REDUCE ANTI-SOCIAL BEHAVIOUR



Work with Police Scotland and Midlothian Community Action Police to increase visible local policing in the area.
Promote youth work/organisations in the community to give young people more opportunities and places they can identify as their spaces.

EASY ACCESS FOR MENTAL HEALTH SUPPORT SERVICES



Identify health/wellbeing services that could deliver the appropriate services for drug/alcohol use and rehabilitation.
Their misuse devastates family and children's lives and ease of access to such services, makes it a priority within our community.

PRIORITIES

SUPPORT AND DEVELOP COMMUNITY GROWING SPACES



ACTIONS AND POTENTIAL PARTNERS

Promote existing growing initiatives and explore the need for further growing sites.

ACCESSIBLE RECYCLING FACILITIES NEEDED



Promote the use of Stobhill Recycling Depot as a local resource for recycling.
Promote the Community Recycling Project at Gorebridge Parish Church.

POTENTIAL PARTNERS

Police Scotland and Midlothian Community Action Police, Local Councillors, Midlothian Council CLD, NHS, Midlothian Voluntary Action, Volunteer Midlothian, Gorebridge Parish Church, GCDT, GCC.

PRIORITIES

CLEANER STREETS E.G. DOG FOULING, FLY TIPPING



ACTIONS AND POTENTIAL PARTNERS

Have annual campaigns to reduce dog fouling.
Investigate with Midlothian Council the use of mobile CCTV cameras where fly tipping is happening on a regular basis with a view to fining those responsible.

MORE REGULAR ROAD MAINTENANCE



Working with Midlothian Council to identify areas of roads in need of repair.

CELEBRATE, SUPPORT AND ENCOURAGE VOLUNTEERING



There are many organisations within Gorebridge who provide services. Recruiting volunteers to deliver these services is essential to the smooth running of all organisations.
A central list, setting out the variety of volunteering for all Gorebridge groups would ensure a fair distribution of volunteers and match them to the appropriate volunteering opportunity/organisation.

EXPLORE COMMUNITY RENEWABLE ENERGY PRODUCTION



Find out whether it is possible to install a wind turbine that would provide the community with renewable energy and also a source of income.
Explore the possibility with Midlothian Council of using coalmine-heat water as an energy source for new infrastructures/house building.

MAKE GOREBRIDGE DEMENTIA FRIENDLY



Promote a better understanding of dementia and an appreciation of the condition.
Appoint a Dementia Friends Champion/organisation for the community.
Work with organisations specialising in Dementia to promote and produce a local leaflet for shops, businesses, residents with details of where they can get help or advice if they meet someone who has dementia that needs support (e.g. local numbers for GP/carers organisations) in their community.

PROTECT, PRESERVE AND CONSERVE OUR HERITAGE



Carry out a mapping exercise to establish buildings of heritage status.
Install appropriate interpretation to raise awareness of the history and industrial heritage of Gorebridge.
Birkenside Pavilion requires upgrading and refurbishment.

POTENTIAL PARTNERS

Midlothian Council, NHS, Midlothian Voluntary Action, local community, Local Councillors, GCDT, GCC, Waste Enforcement.

This theme highlights the priorities that emerged from community feedback and relate to aspects of your place that include care and maintenance as well as influence and sense of control.

We seek to work in partnership to make real progress and invite residents, local groups and businesses, local authority departments and outside agencies to work together with us. If you can help with any of these issues and help improve our community please get in touch with Gorebridge and District Community Council.

A vibrant, safe, welcoming, and attractive place with opportunities for all.

Accessible to all through transport links for rail, road, pedestrians, and cyclists, giving access to our beautiful countryside.

It will be a **vibrant and excellent place for entrepreneurs** to develop, grow new businesses, and invest in, encouraging local employment opportunities with training and education for people of all ages.

The local community will have access to **local community facilities** like The Beacon and the Gorebridge Cares Hive and together we will

celebrate our community spirit through a variety of different events like the Gala Day.

Always **embracing the needs** of our young people and older residents alike with a range of activities that suit everyone's needs.

Our **natural, historical, and cultural heritage** are a key part of our identity.

These will be enhanced, sensitively developed, promoted and protected with **better access for all** ages and abilities.

The Single Midlothian Plan

Gorebridge Local Place Plan and Community Action Priorities

Our Gorebridge Local Place Plan and Community Action Priorities comes from a bottom up approach. It sits together with the Midlothian Single Plan to encourage a joined up approach to community development and improved service provision. This plan represents the views and aspirations of local people and can be used to help encourage partnership working. It promotes opportunities for local groups, public agencies and service providers to work together to improve the quality of life for the people of Gorebridge and District.

The Single Midlothian Plan Key Themes	Gorebridge Community Action Priorities linked to Place and Wellbeing Outcomes
<p>Midlothian will be healthier Midlothian Council and NHS Lothian are working together to help people get support for their health and social care needs.</p>	<p>Movement Well connected with path networks for active travel and public transport that serves the public need</p>
<p>Midlothian will be safer Helping people who may commit a crime. They also help people feel safe.</p>	<p>Civic A safe place to live where people feel they belong and can enjoy the place where they live at any time of the day or night.</p>
<p>Midlothian will get it right for every child Making sure everyone working with children work together, helping children and young people have the best possible start in life.</p>	<p>Stewardship A well maintained and cared for community where people can play an influential role in how their community's needs are met for residents of all ages and abilities</p>
<p>Midlothian will support residents to improve employability and outcomes in our communities Helping communities by supporting businesses and making sure people have enough money.</p>	<p>Resources A community that is well provided for with facilities and services to meet the needs everyone including access to local work and training opportunities to enable people to secure an independent lifestyle.</p>
<p>Midlothian will be greener Improve air quality and build more affordable and accessible homes. Working together to help people have more money to enjoy the things they want to do.</p>	<p>Spaces A place with quality green and natural space for play and recreation. Well maintained roads with parking to meet community and business needs.</p>



The Single Midlothian Plan Key Themes

Midlothian will have a wellbeing economy and be better connected

Economic Development Service will work in partnership with anchor organisations across Midlothian to achieve this outcome

Midlothian will work towards reducing poverty

The number of local people finding themselves under financial pressure has increased due to the cost of living crisis. Supporting individuals and families to increase income, reduce outgoings and ensure they receive all income supports has become even more vital.

Gorebridge Community Action Priorities linked to Place and Wellbeing Outcomes

Spaces

A place with quality green and natural space for play and recreation. Well maintained roads with parking to meet community and business needs. Active travel routes that meet the needs of people of all abilities.

Resources

A community that is well provided for with facilities and services to meet the needs everyone including access to local work and training opportunities to enable people to secure an independent lifestyle.

Strategic Documents for Reference

- www.midlothian.gov.uk/mid-hscp/download/downloads/id/42/midlothian-integration-joint-board-strategic-plan-2022-25-final.pdf
- www.midlothian.gov.uk/download/downloads/id/4989/community_justice_outcome_improvement_plan_and_framework_2023-28.pdf
- www.midlothian.gov.uk/downloads/file/5035/midlothian_children_and_young_people_services_plan_2023_-2026
- www.midlothian.gov.uk/download/downloads/id/4295/midlothian_statutory_community_learning_and_development_plan_2021_to_2024.pdf.pdf
- www.midlothian.gov.uk/download/downloads/id/4801/no_one_left_behind_operating_plan_2022-25.pdf.pdf
- www.midlothian.gov.uk/downloads/file/5111/child_poverty_action_report_year_5_2223

MONITORING, REVIEW AND RE-SETTING



The success of this Local Place Plan and community priorities depends on people in our community getting together to identify and address both the opportunities and threats the community faces.

For its part the Community Council commits itself to constantly monitoring the Plan's progress and, on an annual basis, to organise a public meeting with an agenda which provides for the reporting of progress, or lack of it, and the re-setting of priorities and targets where circumstances have changed.

Acknowledgements and thanks!

We would like to recognize the support that has been given from the following agencies and organisations who have played their part in one way or another in helping create the Gorebridge Local Place Plan:

- Gorebridge and District Community Council www.communitycouncilgorebridge.weebly.com
- Gorebridge Community Development Trust www.gorebridge.org.uk
- Gorebridge Community Cares www.gorebridgecommunitycares.org.uk
- Coalfields Regeneration Trust www.crtconnect.org.uk
- Midlothian Council www.midlothian.gov.uk
- Improvement Services www.improvementservice.org.uk
- Green Map System www.greenmap.org
- Place and Wellbeing Alliance www.ourplace.scot
- Scottish Government www.gov.scot/publications/national-planning-framework-4

MAKING IT HAPPEN

To find out more information about this plan or to volunteer with any projects please email Gorebridge and District Community Council gorebridgecommunitycouncil@gmail.com

A big thank you to everyone in our local communities who helped make this Gorebridge Local Place Plan possible.

Further information and access to resources that supported the creation of this plan can be found at the link below or using the QR Code

www.bit.ly/GorebridgeLPP



Design: Arken Creative
Print: Armstrong Printing (Alloa) Ltd.
Photography: Helen Ann Dunn | Ellen Scott
Man Caamera | Enid Trevett
Guy Amedro



**Coalfields
Regeneration
Trust**

BUILDING PROSPERITY & OPPORTUNITY

The Coalfields Regeneration Trust
Registered Charity No.1074930 in England and Wales
A Charity Registered in Scotland No SCO3927a



For a PDF version of this community action plan and for further information visit

www.crtconnect.org.uk