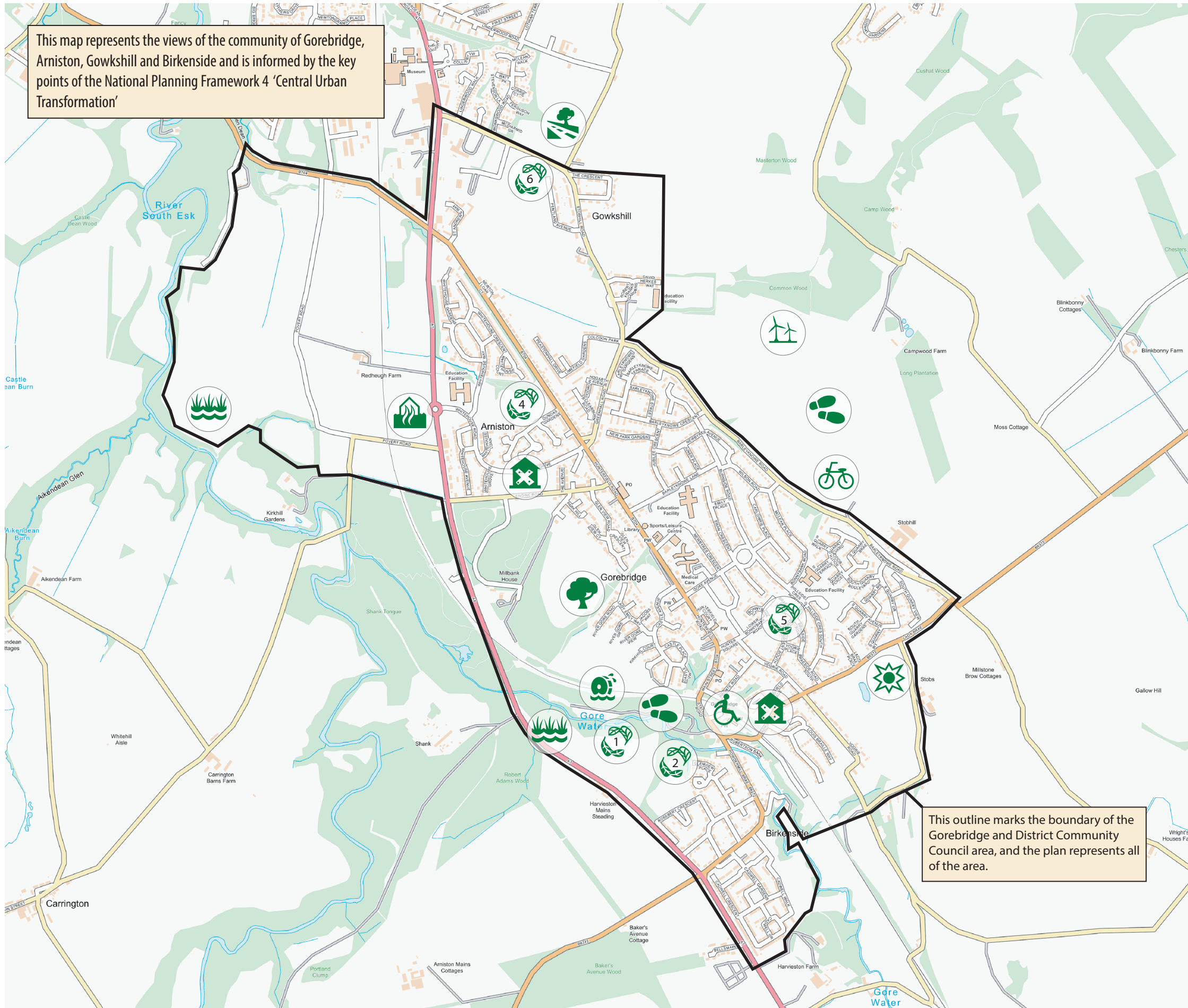


This map represents the views of the community of Gorebridge, Arniston, Gowkshill and Birkenaide and is informed by the key points of the National Planning Framework 4 'Central Urban Transformation'



This outline marks the boundary of the Gorebridge and District Community Council area, and the plan represents all of the area.

Community views - Sustainable places

NPF4 / 2 Climate mitigation and adaptation

- Sustainable urban drainage to protect the Gore Water

NPF4 / 4 Natural places

- 1. Develop a green corridor along the Gore Water
 2. Conserve and protect Birkenaide Park
 3. Conserve and protect Auld Gala Park
 4. Conserve and protect Arniston Park
 5. Vogrie Crescent South Park
 6. Stobhill Road Park

NPF4 / 6 Forestry, woodland and trees

- Boundary trees on the Nancy Teuch pathway

NPF4 / 8 Green belts

- Establish green belt between new housing and Gowkshill

NPF4 / 9 Brownfield, vacant and derelict land and empty buildings

- 1. Old Station House
 2. Engine Road site

NPF4 / 11 Energy

- Wind turbine potential site at Camp Wood
- Geo thermal from old mine workings
- Run of river turbine potential site at Gore Water
- Solar farm at Lady Brae

NPF4 / 13 Sustainable transport

- Re-open the pedestrian access at the station for people of all abilities
- Improve and maintain core path network
- Secure Rights of Way and paths through farmland that are in danger of being lost after development
- No safe cycle routes